

Catalogue
for the
Murray Pollinger Collection
of
Samuel Alcock Porcelain

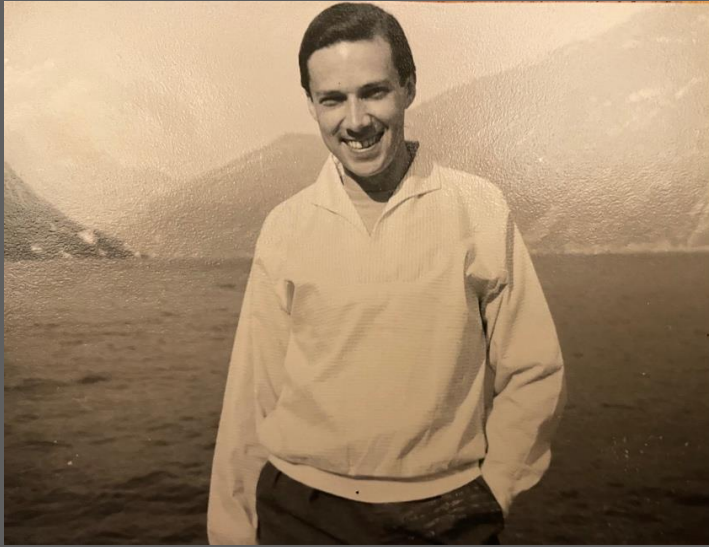
September 2023



Willa Latham

FINE ANTIQUE PORCELAIN

Introduction



Murray Pollinger (1932-2022)

Ask anyone who knew Murray Pollinger, and you get the same answer: “a true gentleman”. After getting to know his family, I understand that this is not just a superficial description: Murray was a gentleman in the full sense of the word. A tall, dark haired and good-looking man, he dressed impeccably in a suit even when on holiday, and until his last days changed before dinner. He was a man of his time, but the formality that

perhaps made some a little wary, only disguised a dry and playful sense of humour to others. Murray was scrupulously honest, which made him successful at his work, as he was a trusted man to do business with.

That business is one that we are all familiar with; as a literary agent he represented great writers such as Roald Dahl, Rosemary Sutcliff and JM Coetzee, among many others. He formed a formidable team with his beloved wife Gina, who we are forever indebted to for matching up Quentin Blake with Roald Dahl, as well as representing many more brilliant illustrators. It is said that Murray never pressured his writers; he drew out the best by trusting them and politely encouraging what he knew they were best at, which often resulted in works of great art.

Apart from being a gentleman, Murray was a true romantic. He loved Italy, good food and wine, and he adored Gina. Together they enjoyed going around the antique shops, finding rare furniture and paintings. On these trips, Murray fell in love with British porcelain. Its artistry, the multitude of wonderful shapes, the endless array of flowers, colours and styles of gilding fascinated him. He would pick up a piece and show it to his children: “Look at the way the handle is made, the design, the painting!” - never daunted by the fact that no-one at home shared quite the same enthusiasm.

The porcelain project was entirely Murray’s. Porcelain was stuck into every spare space in his large London flat. He would spend hours cataloguing it, and it was Samuel Alcock porcelain that he settled on, probably as much for its multitude of styles as for the fact

that nothing written could be found about this important factory. For a man who had loved cataloguing and collecting since he was a boy, this was a retirement project begging to be taken on. So once he retired in the 1990s, the great work began, and collecting turned into researching.

In retirement, Murray said he never wanted to think about work again. While being completely dedicated to the publishing business all his working life, he never spoke about it at home, and once left behind, he never seemed to give it a thought again. Life was complete that way, with nothing left unfinished and no time wasted on dwelling on what wasn't there.

For years, Murray travelled up and down the country to buy and research Samuel Alcock porcelain. He attended every fair and knew every little shop in every little village. I asked many dealers, and many remember him - yet nobody knew he was such a serious collector. Murray was a modest man who didn't believe in talking about himself. He would buy a piece of "Minton", smile politely, leave, and add it to his Alcock collection, carefully researched and catalogued.

In his final years he moved to a beautiful Georgian house with formal grounds in Norfolk. His daughter with her family and cats brought to life the main house, and Murray tucked himself into the dreamy rose-covered 17th Century cottage next to it. It was a place he loved, bringing back an appreciation of nature that he had discovered as an 8-year-old war evacuee in Devon, and later forgotten. "I can't believe I missed so many years of nature!" he once exclaimed.

While he now had his own porcelain room in the outhouse his son-in-law converted for him, he didn't spend much time there anymore; he could be found outdoors most days, roaming the beautiful Norfolk countryside and coast, or working in the garden. Still changing his suit for dinner every day, he lived out his last days as the true gentleman he was: dignified, honest, and a romantic at heart, loving nature, his family and things of beauty.



About the Collection

To my regret, I never got to meet Murray in person. Yet I feel lucky to say that he has become part of my life.

As a porcelain dealer, for many years I tried to find out more about Samuel Alcock porcelain. No book had been written about this important yet mysterious factory, and I was aware that many pieces were mis-identified as made by other makers. The pattern numbers seemed to make no sense at all, and virtually nothing was marked. Where to start?

I asked around, and I heard on the grapevine about an elderly gentleman in Norfolk who had a large, meticulously researched collection. The word was that he wouldn't publish his work. Frustratingly, I could never find out his name, so I never found this gentleman. Finally, I gave up.

Then, only months later, I received a message from someone looking for help to deal with the large porcelain collection of her father, who had recently passed away. I asked some questions, and it became clear to me that the elusive gentleman in Norfolk not only had been right under my nose as the famous literary agent representing authors I had grown up reading, but he had come to find me posthumously.

And so, many trips to Norfolk began, where I stayed with Murray's daughter Claudia and her family and cats. They didn't only become the conduit to this important collection, but also became close friends. Spending long weekends photographing the porcelain and going through the research notes, the collection and the painstaking research behind it came to life.

Murray had left his collection meticulously organised on the shelves of his porcelain room, the research notes neatly packed away in boxes, but with no instructions whatsoever. It was as if he trusted that someone would come and pick it up - or perhaps he died the way he lived: never dwelling on what he didn't have, always fully giving himself to what he did in the moment.

The importance of this collection can't be overstated; apart from one tentative chapter in one of G.A. Godden's books that contains mistakes and unsolved riddles, nothing of note has been widely published to help the collector or dealer. Samuel Alcock porcelain is everywhere, but the majority of it is mis-identified as made by other factories, due to the lack of knowledge. The byzantine pattern numbers are of no help.

All this was cleared up by Murray, together with his good friend Stephen Bressey, with whom he wrote an excellent article. This, however, is not widely available. I found stacks of scrap paper from Murray's business with long lists of numbers on them, written in pencil. When going through them, I realised that with his trademark painstaking patience and precision, this is how Murray cracked the secret code and found the logic behind the pattern numbers, finally making it possible to correctly identify Samuel Alcock porcelain.

This opened up a collection that is as rich as it is diverse. Samuel Alcock was not bothered by an overly fussy sense of style; he made what sold. And that included a dizzying array of designs that sometimes seem contradictory in style. The pattern numbers are, of course, central to identifying that uniquely diverse style of porcelain.

Why Murray never published his research may seem a mystery. But getting to know his family, I started to understand that it might have been exactly because he was a famous literary agent; to Murray and Gina, books were about the art of writing, about perfection, the same level of artistry that Murray admired in the porcelain. For Murray, who did not excel at school but turned into an extraordinary literary agent representing authors of great talent, publishing a book himself was clearly unthinkable.

Now, many years later and after my unsuccessful odyssey to help him publish that book, I am thrilled to present the first batch from his collection for sale, and a website with his research work will follow in the coming year. About selling off the collection, his daughter Claudia told me that she is pleased to know that these beautiful pieces will soon be in the hands of those who will appreciate them; this is how Murray would have liked it.

And Murray himself? To use his favourite expression, he would no doubt be 'tickled pink' to see countless people take joy in the beautiful pieces he so painstakingly assembled.

Willa Latham
September 2023



This catalogue

The Samuel Alcock factory was operative in Staffordshire between 1822 and 1856, after which it was bought by Sir James Duke and Nephews. The factory started as a partnership between the young Samuel Alcock and the older Ralph Stevenson, who provided the factory and capital. Alcock quickly took the business, then called Samuel Alcock & Co, to great heights, building one of the biggest factories of its time. Alcock jumped on the new Rococo Revival fashion and served a huge new middle-class market.

The reason we now don't hear much about Samuel Alcock porcelain is that much of it has been mis-identified over the years and attributed to Coalport, Ridgway, Rockingham or others; Alcock did not mark any of his porcelain save a few rare pieces, and the numbering system is difficult to understand. However, the wares are still widespread and many are of great quality.

Samuel Alcock & Co

You will see one or several pictures of each piece for sale, with a short description. However, you will also see button for more information on each page. This will send you to the online shop where you will be able to see more details and make purchases.

If you need more information or want to purchase several pieces and get them shipped together (which could result in a lower shipping cost please reach out to us and we will be happy to help you.

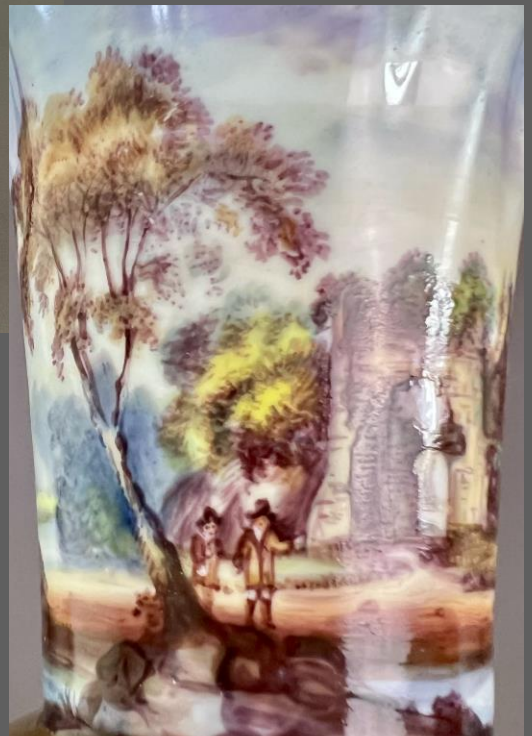
enquiries: willa@gentlerattleofchina.com

With sincere thanks to Claudia Pollinger and family

© all images and text: Willa Latham, Gentle Rattle of China

Willa Latham

FINE ANTIQUE PORCELAIN



1.

A wave-edge vase on a round foot with superb continuous landscape painting of a river scene with ruins and two figures, rich gilding on the upper edge, ball and foot.

Pattern 1077

Year: ca 1826

Size: 18.5cm tall (7.25")

Condition: stem has been well repaired, light rubbing to foot and ball only
£950

[view & buy](#)



2.

A wave-edge vase in cobalt blue and rich gilt decoration with a flower reserve with sepia ground on the front; rich gilding on upper edge, ball and square foot.

This vase forms a perfect garniture with the next listing.

Pattern 1038

Year: ca 1825

Size: 25cm tall (9.75")

Condition: screw through the stem

£725



[view & buy](#)



3.
Pair of wave-edge vases in cobalt blue and rich gilt decoration with superb flower reserves on both sides; trailing gilt pattern on pale yellow ground on the ball; rich gilding on the upper edge and square foot.



Pattern 1045

Year: ca 1825

Size: 22cm tall (8.75")

Condition: one vase has a repaired stem and repaired chip on square foot

£1,250

[view & buy](#)



[view & buy](#)

4.
An extremely rare wave-edge vase with a gilt Chinoiserie scene of a woman in a garden on a white ground; rich gilding on upper edge, ball and square foot.

Pattern 1035
Year: ca 1825
Size: 19.5cm tall (7.75")
Condition: stem has been well repaired
£750





5.

A pair of spill vases with a white pearly ring around the body, a bright pink ground and beautiful octagonal reserves with charming Chinoiserie paintings, one of a traveller with a knapsack by a palm tree, the other of a chap who has, miraculously, just picked a full bunch of grapes off a cherry tree (!).

Pattern: 1103

Year: ca 1825

Size: 11cm tall (8.5")

Condition: some rubbing to the gilt, one more than the other; some small stress cracks in the rims and some crazing.

£550

[view & buy](#)





6.

A Rococo Revival serpent handle vase with pale green ground, very rich gilding, an acanthus moulded rim and a finely painted landscape on one side, white acanthus detail with raised gilding on the other side.

Pattern: 3376

Year: ca 1832

Size: 21cm tall (8.25")

Condition: crazed, the foot has been broken and was repaired with a screw (not water tight anymore) but overall looking bright

£475

[view & buy](#)



[view & buy
periwinkle vase](#)

[view & buy
white vase](#)



7a.
A cylindrical spill vase with scroll and shell moulded border, periwinkle ground with Rococo scroll with hand painted flowers

Pattern: 4053
Year: ca 1835
Size: 11cm tall (8.5")
Condition: faint crack from the rim
£195

7b.
A cylindrical spill vase with scroll and shell moulded border, white ground with superbly painted flowers and moths all around

Pattern: 3528
Year: ca 1833
Size: 11cm tall (8.5")
Condition: faint crack from the rim, crazing
£225



8.

A cornucopia vase with a swan at the foot, maroon ground with pale yellow and gilt acanthus details, swan and shells at the rectangular base, and a finely painted landscape on each side of the cornucopia

Pattern: 6154

Year: ca 1836

Size: 15.5cm (6") tall

Condition: perfect, except a tiny nick off the rim

£575

[view & buy](#)



9.

A miniature garniture of one central cornucopia vase and two tiny trumpet spill vases, all in French blue ground, the cornucopia with a flower reserve and pale green and beige details; the spill vases with beautiful gilt birds.

Pattern: Cornucopia vase: 8211. Spill vases unknown

Year: ca 1840

Size: Cornucopia 11cm tall (8.5"), spill vases 6.5cm (2.5") tall.

Condition: some rubbing throughout; spill vases are crazed. No damage or repairs.

£195



[view & buy](#)



10.

A Rococo Revival potpourri vase with cover, beige ground with pale yellow asymmetrical handles and closed bud finial; two large Rococo scroll enclosed reserves with a lavish flower bouquet on one side and a castle landscape on the other

Pattern: 2/5746

Year: ca 1835

Size: 19cm (7.5") tall

Condition: excellent, only a couple of faint short stress lines off the rim and some crazing on the foot

£425

[view & buy](#)





11.

A potpourri vase with double cover, pale yellow/beige ground with apple green details, Rococo shape with fruit finial and scroll handles and foot; a flower reserve on one side and a landscape reserve on the other.

Pattern 2/1406

Year: 1835

Size: 22cm tall (8.6")

Condition: rim has a glued repair, crazed, cracks under the handles.

£425

[view & buy](#)





12.

A complete writing desk set in the Coalbrookdale style with lavishly encrusted flowers, consisting of a tray, an inkwell with inner liner and double cover, a pen holder, and a blot holder

Pattern unknown

Year: ca 1830-1835

Size: 34cm X 21cm (13.5" X 8.25")

Condition: the base has been broken and restored with improvised foot underneath; some typical small losses to encrusting
£975

[view & buy](#)





13.

A Coalbrookdale-style pen tray on four feet, with a shell scroll handle and encrusted flowers and birds

Pattern 1/2302

Year: ca 1830

Size: 24cm X 9.5cm (9.5" X 3.75")

Condition: has been broken in half and professionally repaired

£195



[view & buy](#)



14.
A pen tray with periwinkle blue pierced rim
and beautiful hand painted flowers

Pattern 3310
Year: ca 1835
Size: 28.5cm X 8.5cm (11.25" X 3.25")
Condition: perfect
£195

[view & buy](#)



15.
A Rococo Revival pen tray in the shape of an elongated leaf, maroon ground with pale yellow accents and beautiful hand painted flowers

Pattern 6324
Year: ca 1840
Size: 30.5cm X 11cm (11.75" X 4.25")
Condition: some tiny nicks off the ends of the leaves
£175

[view & buy](#)



16.

An apple green ground pen tray with arched moulding along the rims and hand painted flowers in the centre

Pattern 2/4933

Year: ca 1845

Size: 29.5cm X 10cm (11.75" X 4")

Condition: a stress line coming off the rim
£195



[view & buy](#)



17.

An extremely rare watch stand with encrusted flowers, a finely painted river landscape in the watch hole, and a storage compartment at the back

[view & buy](#)

Pattern 3688

Year: ca 1837

Size: 11cm X 11cm, 9cm tall
(4.25" X 4.25", 3.5" tall)

Condition: one foot and the top have been repaired; some typical small losses to encrusted flowers
£675



18.

A round screw-top snuff box with flowers all around the side, a stunning flower bouquet against sepia ground on the cover and a fine river landscape with a church and two figures on the bottom

Pattern unknown

Year: ca 1825

Size: 10.5cm diameter (4.15")

Condition: a strange firing mark on the cover, some faint cracks in the wall and some wear throughout

£195



[view & buy](#)



19.
A round potpourri basket with
pierced cover and twig handle;
encrusted white flowers on the
cover and stunning hand painted
flowers against a purple background
all around the sides

Pattern unknown

Year: ca 1825

Size: 13cm diameter (5.1")

Condition: some typical small losses
to encrusted flowers

£275



[view & buy](#)



20.

A maroon ground basket in Rococo Revival style with pierced pale yellow ends, a twig handle and five flower reserves with single flowers

Pattern 2/5610

Year: ca 1835

Size: 22.5cm (8.75") long, 13cm (5") tall

Condition: handle has been repaired

£285



[view & buy](#)



21.

A bright apple green basket with pale yellow handle, pink and gilt trumpet flower in the rim, water lily moulded rims and a beautiful bird painting in the centre

Pattern 2/428

Year: ca 1840

Size: 19.5cm (7.75") long, 12.5cm (4.85") tall

Condition: well repaired handle, repaired crack rendered on underside

£225



[view & buy](#)



22.

An apple green basket of wavy Rococo Revival shape, with pale yellow handle and rims, pebble and peacock gilding on the rims and four flower sprays held in Rococo scrolled overlapping reserves

Pattern 2/7403

Year: ca 1842

Size: 26.5cm (10.5") long, 16cm (6.25") tall

Condition: some crazing and minor wear

£425



[view & buy](#)



23.

A small basket in Rococo Revival style with scroll and shell moulded borders, pierced handles on both ends, a pale yellow twig handle, a French blue ground with pale yellow foliage and a fine landscape painting in the centre

Pattern unknown

Year: ca 1830

Size: 17.5cm (6.8") long,
9cm (3.5") tall

Condition: excellent

£375



[view & buy](#)



[view & buy](#)

24.

A large basket in Rococo Revival style with pale yellow twig handle, moulded borders, a bright French blue ground with intricate white geometric pattern, and a beautiful pink wild rose painting in the centre. Illustrated in Geoffrey A. Godden's "Staffordshire Porcelain" on page 39

Pattern 3/1729

Year: ca 1840

Size: 29cm (11.5") long, 18cm (7") tall

Condition: perfect

£625



25.

A large basket with a Persian-inspired moulded Alma border in black on a bright pink ground, a moulded swan-head handle in white, gilt and pale green, pierced ends and a beautiful painting of a great tit in the centre

Pattern 3/7978

Year: 1855

Size: 27.5cm (10.8") long, 15cm (6") tall

Condition: professional repair in one corner, only visible from underside

£550



[view & buy](#)

26.

A miniature basket on three little feet, melted snow shape with twig handle, cobalt blue ground with pale yellow and gilt details, piercings on both ends

Pattern 1845

Year: 1822

Size: 5.5cm (2.2") tall

Condition: two of the feet have been repaired

£60

[view & buy](#)



27.

A rectangular miniature basket on a raised foot with a twig handle, moulded pale peach rims and a little flower bouquet in the centre

Pattern unknown

Year: ca 1830

Size: 8cm (3.1") tall

Condition: a few little glaze lines just above the foot

£60

[view & buy](#)



28.

A shell and scroll moulded taperstick with a curled twig handle, and three sections separated by gilt with flower sprays painted onto the very rare eau de nil ground

Pattern 4133

Year: ca 1835

Size: 12cm (4.75") diameter

Condition: cracks in the rim of candle holder and a firing crack off the rim of the plate

£115

[view & buy](#)

29.

A warm apple green ground taperstick with twig handle and three beautiful flower reserves

Pattern 7824

Year: ca 1838

Size: 11cm (4.5") diameter

Condition: perfect

£145

[view & buy](#)





30.

A maroon ground taperstick with peach coloured acanthus handle, trailing vines and little flowers in peach, maroon and gilt

Pattern 2/5572

Year: ca 1845

Size: 11cm (4.5") diameter

Condition: perfect

£145

[view & buy](#)

31.

A pair of round cream jars with covers, maroon ground with pale yellow and gilt details. These would have been part of a vanity set.

Pattern unknown

Year: ca 1840

Size: 6.6cm (2.6") diameter

Condition: bit of wear and some crazing

£95



[view & buy](#)



32.

A magnificent large complete dessert service consisting of a high footed centre piece, four rectangular dishes, four oval dishes, three leaf dishes, two sauce tureens with covers and stands, and twelve plates. With melted snow moulded borders, asymmetrical twig handles on the dishes, a deep cobalt blue ground with very rich geometric gilt patterns with trailing anthemions, and geometrically shaped flower reserves with richly painted flower bouquets. Please ask for more pictures!

Pattern 540

Year: ca 1822

Size: plates are 23cm (9") diameter

Condition: overall excellent and fully usable; one dish with rivet repair and some crazing and rubbing throughout

£7,250

[view & buy](#)



33.

A spectacular large complete dessert service consisting of a high footed centre piece, two square dishes, two diamond shape dishes, one oval dish, and twelve plates. With Persian inspired "Alma" moulded borders in maroon and gilt and stunning bird paintings including grouse, pheasants, storks and fancy birds. Each item with finely painted miniature landscape reserves in the border. Please ask for more pictures!

Provenance: made for an important family, crested medallion with red griffin on border of each item.

Pattern

Year: ca 1855

Size: plates are 23cm (9") diameter

Condition: minor crazing and 3 minor rim cracks, footed central comport repaired and crazed

[view & buy](#)



34.

A sublimely painted part dessert service consisting of two footed comports and six plates, painted with excellent named flower studies. Pale green border motif with beautiful gilding and pierced handles on the comports

Pattern 3/3538

Year: ca 1850

Size: plates are 24cm (9.25") diameter

Condition: absolutely perfect

£2,600



[view & buy](#)



35.

A footed rectangular central comport or centre piece, cobalt blue ground with periwinkle rosettes and melted snow border and sublimely painted flowers in the centre

Pattern 542

Year: ca 1822

Size: 37cm X 23cm (14.5" X 9")

Condition: absolutely perfect

£650



[view & buy](#)



36.

A footed rectangular central comport or centre piece, periwinkle / lilac ground with melted snow and holly leaf borders and flowers, a large pink wild rose painting in the centre

There are several matching pieces in similar although not identical patterns, see the plates section.

Pattern 516
Year: ca 1822
Size: 37cm X 23cm
(14.5" X 9")
Condition:
absolutely perfect
£650



[view & buy](#)



37a.

A stunning and very rare high footed round composit in the writhen shape, eau de nil green with gilt sprays and a stunning central painting of a pink flower

A matching plate is available as well, see next page.

Pattern 1284

Year: ca 1827

Size: 28cm diameter
(11")

Condition: slight rubbing
£750



[view & buy](#)



37b.

A stunning and very rare one-handled dish in the writhen shape, eau de nil green with gilt sprays and a stunning central painting of a pink rose

A matching footed comport is available as well, see previous page.



Pattern 1284

Year: ca 1827

Size: 26.5cm X 24cm (10.5' X 9.5")

Condition: slight rubbing

£225

[view & buy](#)



38.

A stunning and very rare large punch bowl in a variation on the writhen shape, emerald green ground with large flower sprays in white and gilt, and a stunning freely painted landscape of sublime quality in the centre

Pattern 1150

Year: ca 1826

Size: 27.2cm diameter (10.75")

Condition: slight rubbing

£850



[view & buy](#)



39.

A muffin dish with cover, simple white ground with fruit basket finial surrounded by moulded acanthus leaves, with fine flower sprays and wild strawberries by William Pollard

Provenance: Sir Leslie Joseph collection. Joseph wrote a book on Swansea porcelain and would have owned this muffin dish because it was painted by William Pollard. Pollard was the master of understated flower paintings; he painted only true wildflowers, realistically without the usual romantic cultivated species such as roses.



Pattern unknown
Year: ca 1822
Size: 22cm diameter (8.75")
Condition: some crazing and slight discolouration
£425

[view & buy](#)



40.
A footed two-handled sauce tureen with cover, maroon and pale yellow ground with beautiful hand painted flower sprays on lower part of body; twisted handles and a petticoat stem

Pattern 2/817

Year: ca 1842

Size: 20cm tall incl. finial (8.5")

Condition: very faint stress cracks on inside, these don't go through the body
£375



[view & buy](#)



41.

An oval low-footed comport with two handles and an octagonally scrolled shape, a moulded surface with pale yellow and white scrolling foliage on a sage green ground, and a stunning landscape in the centre of a ruin with two visitors

Pattern possibly 3/4434

Year: ca 1850

Size: 27cm X 22cm (10.5" X 8.5")

Condition: light wear

£375



[view & buy](#)



42.

A one-handed leaf dish with white melted snow and holly leaf border on a periwinkle ground, and a beautiful flower study of a yellow ranunculus in the centre

Pattern 507

Year: ca 1822

Size: 26cm X 21.5cm (10.25" X 8.5")

Condition: some rubbing

£195



[view & buy](#)



43.

A two-handled leaf shaped dish with white melted snow border on a periwinkle ground, and a beautifully painted bouquet of pink and white roses in the centre

Pattern 956

Year: ca 1823

Size: 28cm X 20.5cm (11" X 8")

Condition: some rubbing

£225



[view & buy](#)



44.
A plate with white melted snow border
on a periwinkle ground with tiny gilt
stars, with a beautifully painted flower
bouquet in the centre

Pattern unknown
Year: ca 1822
Size: 23cm diameter (9")
Condition: rubbing
£175



[view & buy](#)



45.

A plate with white melted snow border on a periwinkle ground and a beautifully painted landscape of a country house and a cottage with a figure in the centre

Pattern unknown

Year: ca 1822

Size: 22cm diameter (8.5")

Condition: rubbing and one chip

£125



[view & buy](#)



46.

A plate with white melted snow border on a sepia green ground with gilt and full colour flower sprays, and a beautifully painted flower bouquet in the centre

Provenance: Geoffrey A. Godden collection

Pattern 843

Year: ca 1822

Size: 23cm diameter (9")

Condition: some rubbing and crazing

£195



[view & buy](#)



47.

A one-handed dish or plate with pierced inverted shell border and gilt vines, and a rather quirkily painted landscape with flowers and a fence in the centre

Pattern 547

Year: ca 1822

Size: 24cm X 22cm (9.5" X 8.5")

Condition: rubbing and crazing
£145



[view & buy](#)



48.
A one-handed leaf dish
with holly leaf border
and a simple gilt rim, a
white ground with
colourful flower sprays

Pattern 1082
Year: ca 1823
Size: 25.5cm X 22cm
(10" X 8.5")
Condition: slight
rubbing to gilt
£195

[view & buy](#)





49.

A plate or tureen stand in “wave edge” shape, simple gilt border and beautiful hand painted flower sprays

[view & buy](#)

Pattern 1082

Year: ca 1823

Size: 21cm (9")

Condition: excellent

£145



50.
A teacup and saucer in the “half orange” shape, white with simple gilt rim and beautiful hand painted flower sprays

Pattern unknown, similar to 1082
Year: ca 1823
Size: cup diameter 10cm (4”), saucer diameter 14.2cm (5.5”)
Condition: excellent, some rubbing to gilt
£150



[view & buy](#)



51.

A pair of small side plates, white with simple gilt border and hand painted flower sprays

[view & buy](#)

These plates go together perfectly with the pair of sunflower dishes

Pattern 1082

Year: ca 1823

Size: 17.6cm (7") diameter

Condition: one excellent, the other crazed and with crack around the centre

£85





52.

A pair of small deep dishes in sunflower design, simple gilt rim and hand painted flower sprays. Charming irregularity in rim shape showing its hand-shaped nature

These dishes go together perfectly with the pair of small side plates

Pattern 1082

Year: ca 1823

Size: 15cm (6") diameter

Condition: light crazing and some insignificant stress lines from the rim

£150

[view & buy](#)



53.
A miniature basket or trinket
dish, white with simple gilt rim
and hand painted flower sprays,
handle in twig shape

Pattern 1082

Year: ca 1823

Size: 7.6cm (3") diameter

Condition: some light rubbing,
faint crack coming off the rim

£75



[view & buy](#)



54.

A plate in the "wave edge" shape with deep cobalt blue ground, simple gilt rim and fine gilt border motif, acanthus moulding around the centre and a beautiful hand painted flower garden scene in the centre

Pattern 1126

Year: ca 1824

Size: 21cm (9") diameter

Condition: excellent

£185



[view & buy](#)



55.

A pair of “cornucopia” shape pierced dessert plates, decorated in a grey ground with yellow and rich gilt flower and vine motif, and each a hand painted heather plant in the centre, one yellow and one pink



Pattern 2/5174

Year: ca 1835

Size: 23.5cm (9.25”) diameter

Condition: perfect

£325

[view & buy](#)



56.

A pair of cake plates in the Rococo Revival style belonging to a “writhen” shape tea service, each with two pierced handles, decorated with grey vines and gilt, and each a beautiful flower posy in the centre

Pattern 1/1515

Year: ca 1847

Size: 25cm X 22.5cm (9”)

Condition: perfect

£325



[view & buy](#)



57.

A pair of dessert plates in the "Alma" shape, with richly moulded and gilded borders and fine flower reserves, one in grey and gilt, the other in pink and gilt, and finely painted central reserves one with a cuckoo, the other with a Rococo scene of a gentleman playing the bagpipes to a lady and her dog

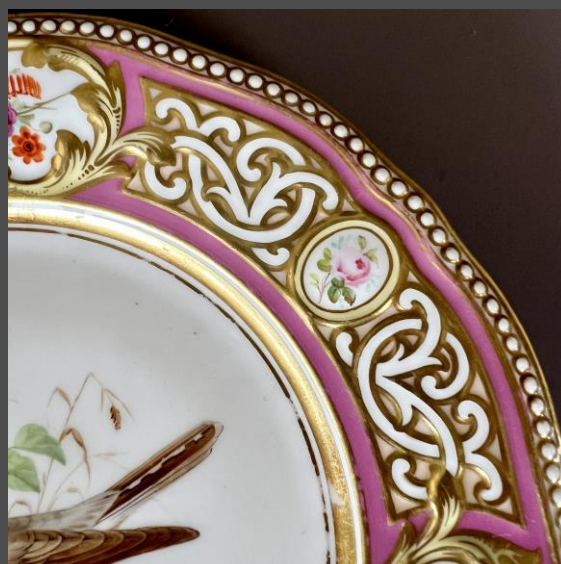
Patterns 3/7188 (bird) and unknown

Year: 1855

Size: 23cm (9") diameter

Condition: excellent, light rubbing

£370



[view & buy](#)



58.

A set of four pierced dessert plates, 3 in the "Staffordshire", in harlequin pastel colours with gilt, three with named birds and one with a flower

Patterns 3/9414, 3/9772 and unknown

Year: ca 1857

Size: 22.5cm (8.75") diameter

Condition: excellent except some lines in the top left plate

£550



[view & buy](#)



59.

A magnificent full tea service serving six, consisting of a teapot with cover and stand, a milk jug, a sucrier with cover, a cake plate, a slop bowl and six trios each consisting of a teacup, a coffee cup and a saucer; in deep cobalt blue with a yellow and gilt lattice pattern and beautiful single flower reserves; "Rustic loop" shape with acorn finials

Pattern 5180

Year: ca 1837

Condition: teapot cracked and stand crazed; otherwise excellent condition; teapot not suitable for use, but the rest of the service is.
£1,450

[view & buy](#)





60.

A solitary tea set consisting of a teapot with cover on a stand and a trio consisting of a teacup, a coffee cup and a saucer, in "half orange" shape with deep cobalt blue and yellow/gilt latticed ground and very finely painted landscapes

Pattern 2085

Year: ca 1825

Size: teapot 27cm (10.5") from handle to spout

Condition: excellent, some rubbing, tiny chip off tip of spout teapot; stress line in teapot cover; suitable for use

£625



[view & buy](#)



61.

A solitaire tea set consisting of a teapot with cover, a milk jug and a small cup and saucer, in "melted snow" shape, the cup with double drop handle, with deep cobalt blue ground, rich gilt vines and hand painted flower reserves. The teapot and cup and saucer of the same pattern 2085, the milk jug a matched pattern 2199

Patterns 2085 and 2199

Year: ca 1825

Size: teapot 29cm (11.5") from handle to spout

Condition: excellent except a faint crack in teapot body; possibly still suitable for use

£575



[view & buy](#)



62.

A solitaire tea set consisting of a teapot with cover on a stand, a sucrier with cover, a milk jug, a cake plate and a trio consisting of a teacup, a coffee cup and a saucer. In "written" shape with white ground and gilt, and charming pink-tinted florals



Pattern 2231

Year: ca 1826

Size: teapot 29cm (11.5") from handle to spout

Condition: excellent except a crack in the teapot handle, otherwise no damage or rubbing; suitable for use if teapot handled with two hands. Some crazing on teapot and stand

£675



[view & buy](#)



63.

A tête-à-tête tea set consisting of a teapot with cover on a stand, and two small cups and saucers, in “rustic loop” shape, the stand in “inverted shell” shape, with deep cobalt blue ground, rich acanthus gilding and very finely hand painted reserves with flowers and birds

Patterns 3057

Year: ca 1830

Size: teapot 25cm (9.75”) from handle to spout

Condition: some damage to teapot and both saucers, good on display

£475



[view & buy](#)



64.

A solitaire tea set consisting of a teapot with cover and a trio consisting of a teacup, a coffee cup and a saucer, in "rustic loop" shape, with beige ground with rich pale yellow and gilt acanthus pattern and beautiful flower posies in the centre of each item

Pattern 3801

Year: ca 1833

Size: teapot 25.5cm (10.25") from handle to spout

Condition: some light crazing and rubbing, some light stress lines in the teapot shoulder and under the spout but probably still good for use, finial has been re-stuck

£475



[view & buy](#)



65.

A matched solitaire tea set consisting of a teapot with cover, a sucrier with cover, a milk jug and a matched trio consisting of a teacup, a coffee cup and a saucer. With pink ground and looping vines, and hand painted flowers

Patterns 1/6600 and 1/9821

Year: ca 1836

Size: teapot 26cm (10.25") from handle to spout

Condition: teapot has one foot replaced, repair to sucrier, some minor rubbing and crazing, but suitable for use

£695



[view & buy](#)



66.

A teapot with cover and milk jug in the "writhen" shape, emerald green ground with white and pale yellow trailing florals

Pattern 2286

Year: ca 1826

Size: teapot 28cm (10.25") from handle to spout; milk jug 14cm (5.5") from handle to mouth

Condition: perfect

£425



[view & buy](#)



67.

A teapot with cover in the “rustic bean” shape, cobalt blue ground with gilt acanthus motif and finely painted flower posies on the belly of the teapot

Pattern 5782

Year: ca 1837

Size: teapot 25cm (10.25”) from handle to spout

Condition: perfect

£375



[view & buy](#)



68.

A milk jug in the “hockey stick” shape, cobalt blue ground with pale yellow florals and gilt trailing vines, , a beautiful flower posy inside the mouth

Pattern 1679

Year: ca 1824

Size: 13cm (5.1”) from handle to mouth

Condition: perfect

£125

[view & buy](#)

69.

A milk jug in the “half orange” shape, drab coloured ground with fresh pink dog roses and gilt foliage

Pattern 2095

Year: ca 1825

Size: 15.5cm (6.1”) from handle to mouth

Condition: some minor cracks in and near handle

£135



[view & buy](#)



70.

A milk jug in the “French” shape, periwinkle blue ground with fresh pink roses and gilt foliage and rims

Pattern 2371

Year: ca 1826

Size: 16.5cm (6.5”) from handle to mouth

Condition: some fine crazing
£135

[view & buy](#)

71.

A coffee cup and saucer in the “melted snow” shape, deep cobalt blue ground with rich gilding, purple reserves with white flowers

Provenance: Geoffrey A. Godden collection

Pattern 1951

Year: ca 1824

Size: cup 7.5cm (3”), saucer 14cm (5.5”)

Condition: some stacking wear only

£185



[view & buy](#)



72.

A teacup and saucer with milk jug in the “melted snow” shape with double drop handles, pale yellow ground with rich gilt and cobalt blue acanthus pattern and finely painted flower reserves in centre teacup, saucer and inside the mouth of the milk jug

[view & buy](#)



Pattern 1867

Year: ca 1824

Size: cup 7.5cm (3”), saucer 14cm (5.5”),
jug 13.5cm (5.3”) between handle and
mouth

Condition: handle of milk jug re-stuck,
teacup and saucer perfect

£295



73.

A teacup and milk jug in the
"melted snow" shape, pink
ground with gilding and little
blue bluebells and forget-me-
nots

Pattern 2054

Year: ca 1825

Size: milk jug 16cm (6.25")
from handle to mouth, teacup
9cm (3.5") diameter, saucer
14cm (5.5") diameter

Condition: excellent

£375



[view & buy](#)



74.

A "true trio" consisting of a teacup, coffee cup and saucer, with two small cake plates with French blue borders and beautiful hand painted flowers



Pattern 4339

Year: ca 1830

Size: plates 17.5cm (6.9"), teacup 10.5cm (4.15") diameter, coffee cup 8.5cm (3.35") diameter, saucer 15cm (6") diameter

Condition: crack in coffee cup, some light rubbing

£215

[view & buy](#)



75.

A teacup and milk with white ground, cobalt blue, beige and gilt rims and beautiful hand painted flowers

Pattern 3650

Year: ca 1831

Size: milk jug 15cm (6") from handle to mouth, teacup 10cm (4") diameter, saucer 15cm (6") diameter

Condition: excellent, firing crack in bottom of milk jug

£315



[view & buy](#)



76.
A teacup and saucer in the “melted snow” shape with double drop handle, decorated in cobalt blue and elaborate gilt and finely hand painted flower reserves

Pattern unknown
Year: ca 1825
Size: teacup 9cm (3.5”) diameter,
saucer 14.5cm (5.75”) diameter
Condition: excellent
£195



[view & buy](#)



77a.

A coffee cup and saucer in the "melted snow" shape with double drop handle, decorated in a famous Coalport / H&R Daniel pattern of elaborate gilt on a white ground and finely hand painted flowers

Pattern 1860

Year: ca 1825

Size: teacup 7.3cm (2.85"),
saucer 14cm (5.5") diameter

Condition: excellent

£195

77b.

A plate in the "melted snow" shape, decorated in a famous Coalport / H&R Daniel pattern of elaborate gilt on a white ground and finely hand painted flowers

Pattern 1860

Year: ca 1825

Size: 24cm (9.5") diameter

Condition: excellent, minor stacking wear

£165



[view & buy
coffee cup](#)

[view & buy
plate](#)





78.

A "true trio" consisting of a teacup, coffee cup and saucer in "bell embossed" shape, pink ground with elaborate gilt and very finely painted landscape reserves

Pattern 2464

Year: ca 1827

Size: teacup 10cm (4"), coffee cup 8.2cm (3.25"), saucer 14.7cm (5.75") diameter

Condition: excellent, very minor rubbing

£225



[view & buy](#)



79.
A breakfast cup and saucer in "low fluted" shape, pale yellow and peacock blue ground with trailing gilt pattern

Pattern 3293 or 3809 – probably 3293 and 3809 was a mis-painted number

Year: ca 1830

Size: breakfast cup 10.6cm (4.15"), saucer 17cm (6.75") diameter

Condition: excellent, minor rubbing
£145



[view & buy](#)



80.

A teacup and saucer in "low fluted" shape, eau de nil ground with trailing gilt and fine hand painted flowers

Pattern 4562

Year: ca 1833

Size: teacup 9.5cm (3.75"), saucer 14.5cm (5.75") diameter

Condition: excellent, minor rubbing

£175

[view & buy](#)



81.

A coffee cup and saucer in
"embossed fluted" shape, pale
yellow ground with flowers and
butterflies

Pattern 4626

Year: ca 1834

Size: teacup 8cm (3.15"), saucer
14.5cm (5.75") diameter

Condition: excellent, some
stacking wear

£150



[view & buy](#)



82.

A set of a breakfast coffee cup and saucer, and a normal size coffee cup and saucer, decorated in pale yellow and French blue ground with intricate gilding and beautiful hand painted flowers

Pattern 4928

Year: ca 1835

Size: breakfast cup 11.5cm (4.5"), breakfast saucer 17.5cm (6.9"); coffee cup 8.3cm (3.25"), coffee saucer 15cm (5.9") diameter

Condition: coffee cup has a crack; some minor wear

£220



[view & buy](#)



83.

A "true trio" consisting of a teacup a coffee cup and a saucer, with "rustic bean" handles, decorated in a cobalt blue ground with striking gilt pattern, finely painted flower reserves and a beautiful peacock image in the centre. The peacock indicates that this pattern might have been designed for the Manners family, the Duke of Rutland at Haddon Hall in Derbyshire.



Pattern 6157

Year: ca 1839

Size: teacup 11cm (4.35"); coffee cup 9.5cm (3.75"), saucer 15.5cm (6.1") diameter

Condition: excellent, tiny bit of rubbing on teacup handle

£225

[view & buy](#)



84.

A teacup and saucer with “rustic bean” handle, decorated in a striking apple green ground with white lightning pattern and finely painted flower reserves

Pattern 6491

Year: ca 1840

Size: teacup 11cm (4.35”); saucer
15.5cm (6.1”) diameter

Condition: excellent

£175

[view & buy](#)



85.

A "true trio" consisting of a teacup, a coffee cup and a saucer with "rustic bean" handles, with striking geometric grey and apple green borders and beautiful pink flower studies in the centre of each item

Pattern 7528

Year: ca 1842

Size: teacup 11cm (4.35"); coffee cup 9.5cm (3.75"), saucer 15.5cm (6.1") diameter

Condition: some crazing in coffee cup, crack in teacup

£175



[view & buy](#)



86.

A “true trio” consisting of a teacup, a coffee cup and a saucer with “rustic bean” handles, with maroon and pale yellow ground and beautiful flower studies in the centre of each item

Pattern 8021

Year: ca 1843

Size: teacup 11cm (4.35”); coffee cup 9.5cm (3.75”), saucer 15.5cm (6.1”) diameter

Condition: very good, faint glaze line in underside of saucer, does not go through the porcelain

£185



[view & buy](#)



87.

A teacup and saucer with ring handle, with green and pale yellow ground in Japanese style, and beautiful flower studies in the centre of each item and a ladybird on the saucer

Pattern 8184

Year: ca 1843

Size: teacup 10.2cm (4"), saucer
15cm (6") diameter

Condition: saucer crazed
£145



[view & buy](#)



88.
A teacup and saucer with “rustic bean” handle, with French blue and pale yellow ground, gilding and beautiful hand painted flowers



Pattern 8237
Year: ca 1843
Size: teacup 10.5cm (4.15”), saucer
15.8cm (6.25”) diameter
Condition: excellent
£165

[view & buy](#)



89.

A true trio consisting of a teacup, a coffee cup and saucer, "rustic bean" handles, with a pattern of an apple green ground and white vines, and flower posies

Pattern 8435

Year: ca 1843

Size: teacup 10.5cm (4.15"), saucer
15.8cm (6.25") diameter

Condition: excellent

£195



[view & buy](#)



90a-1.

A true trio consisting of a teacup, a coffee cup and saucer, "rustic bean" handles, cobalt blue and pale yellow ground with finely painted gilding and flower studies.

There are two more of these trios available, as well as two cake plates, see separate listings.

Pattern 8884

Year: ca 1844

Size: teacup 11cm (4.35"),

coffee cup 9.5cm (3.75"),

saucer 15.5cm (6.10)

Condition: coffee cup finely crazed

£185



[view & buy](#)



90a-2.

A true trio consisting of a teacup, a coffee cup and saucer, "rustic bean" handles, cobalt blue and pale yellow ground with finely painted gilding and flower studies.

There are two more of these trios available, as well as two cake plates, see separate listings.

Pattern 8884

Year: ca 1844

Size: teacup 11cm (4.35"), coffee cup 9.5cm (3.75"), saucer 15.5cm (6.10)

Condition: coffee cup finely crazed and slightly discoloured

£175



[view & buy](#)



90a-3.

A true trio consisting of a teacup, a coffee cup and saucer, “rustic bean” handles, cobalt blue and pale yellow ground with finely painted gilding and flower studies.

There are two more of these trios available, as well as two cake plates, see separate listings.

Pattern 8884

Year: ca 1844

Size: teacup 11cm (4.35”), coffee cup 9.5cm (3.75”), saucer 15.5cm (6.10)

Condition: coffee cup finely crazed and a bit discoloured

£165



[view & buy](#)



90b-1.

A cake plate, cobalt blue and pale yellow ground with finely painted gilding and a flower study.

There is one more plate like this available, as well as three true trios, see separate listings.

Pattern 8884

Year: ca 1844

Size: 25.5cm (10") X 22.2cm (8.75")

Condition: excellent

£185



[view & buy](#)



90b-2.

A cake plate, cobalt blue and pale yellow ground with finely painted gilding and a flower study.

There is one more plate like this available, as well as three true trios, see separate listings.

Pattern 8884

Year: ca 1844

Size: 25.5cm (10") X 22.2cm (8.75")

Condition: excellent

£185



[view & buy](#)



91.

A teacup and saucer in the “rustic bean” shape, with a very striking pattern of deep peacock blue and pale yellow shapes on the rims, and beautiful flower arrangements painted in the style of William Pollard.

Pattern 9058

Year: ca 1845

Size: teacup 10.5cm (4.25”), saucer 15.5cm (6”)

Condition: excellent, tiny bit of crazing on foot of teacup only
£185



[view & buy](#)



92.

A true trio consisting of a teacup, a coffee cup and a saucer, "rustic bean" shape, in deep maroon and pale yellow ground, with gilt and finely painted landscape reserves

Pattern 9508

Year: ca 1845

Size: teacup 10.5cm (4.25"), coffee cup 9cm (3.5"), saucer 15.5cm (6")

Condition: very good except one chip off the saucer and some very light wear

£185

[view & buy](#)





93.

A true trio consisting of a teacup, a coffee cup and a saucer, "rustic bean" shape, in beautiful yellow pattern with acanthus leaves and very finely painted romantic landscapes with stately homes and figures

Pattern 1/178

Year: ca 1845

Size: teacup 10.5cm (4.25"), coffee cup 9cm (3.5"), saucer 15.5cm (6")

Condition: excellent, some light wear

£195



[view & buy](#)



94.

A cup and saucer (it could be either a teacup or a coffee cup) in deep maroon ground with rich gilding inside and out, and beautiful hand painted flower reserves. This pattern is a remake of pattern 9508, on a later shape, see listing 92.

Pattern 1/1697

Year: ca 1845

Size: cup 8.8cm (3.5"), saucer
14.5cm (5.75")

Condition: excellent, some light
wear



[view & buy](#)



95.

A true trio consisting of a teacup, a coffee cup and a saucer, the cups with "Bath" handles and in Mid-Victorian narrow shapes, with a bright pink ground, pale yellow and turquoise foliage and finely painted fruit reserves.

Pattern 1/6435

Year: ca 1850

Size: teacup 8cm (3.15"), coffee cup
7.2cm (2.75"), saucer 14.5cm (5.75")

Condition: excellent



[view & buy](#)



96.

A charming cream or water jug with C-scroll handle, decorated in a deep maroon ground with a beautifully hand painted flower reserve on each side.

Pattern 1880

Year: ca 1830

Size: 19.5cm (7.75") from handle to mouth, 21.5cm (8.5") tall

Condition: crazing, and a star crack in the bottom, but no wear. Not suitable to hold liquid anymore

£125

[view & buy](#)



97.

A cream or water jug with knobbed twig handle and moulded foliage under the beak, decorated in a warm grey ground with a finely painted landscape on one side and rich flowers on the other, set in a gilt and pale yellow foliage surround.

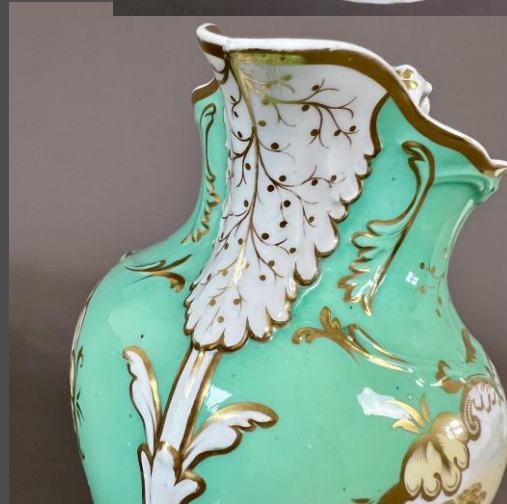
Pattern 3835

Year: ca 1840

Size: 14.5cm (5.75") from handle to mouth, 17cm (6.75") tall

Condition: crazed and with a crack in the bottom; beautiful on display but not suitable to hold liquid
£125

[view & buy](#)



98.

A cream or water jug with knobbed twig handle and moulded foliage under the beak, decorated in a pale green ground with a finely painted landscape on one side and rich flowers on the other, set in a gilt and pale yellow foliage surround

Pattern 1/3927

Year: ca 1840

Size: 17cm (6.75") from handle to mouth, 19cm (7.5") tall

Condition: light wear and some discolouration on the inside

£245

[view & buy](#)



99.
A cream or water jug with knobbed
twig handle, in a French blue ground
with rich scrolled gilding and beautiful
pink and yellow hand painted flowers
on either side

Pattern 4874
Year: ca 1842
Size: 15cm (6") from handle to mouth,
13cm (5.10") tall
Condition: excellent, some light
rubbing
£245



[view & buy](#)



100.

A cream or water jug with elegant scrolled moulding, an eau de nil ground colour with yellow and gilt leafy scrolls, with a jay on one face and a landscape on the other

Pattern unknown

Year: 1854

Size: 143m (5.1") from handle to mouth, 14cm (5.75") tall

Condition: a crack in the top of the handle with associated line in the body, some crazing but the jug is stable and good for use

£225



[view & buy](#)

You can find details about and purchase
each listing online here:

SEE ALL LISTINGS

Feel free to ask any questions:
willa@gentlerattleofchina.com

We provide secure global shipping,
please ask us for combined shipping options

© on all images and text
Willa Latham, Gentle Rattle of China

With sincere thanks to
Claudia Pollinger and family

Willa Latham

FINE ANTIQUE PORCELAIN